

# COVID-19

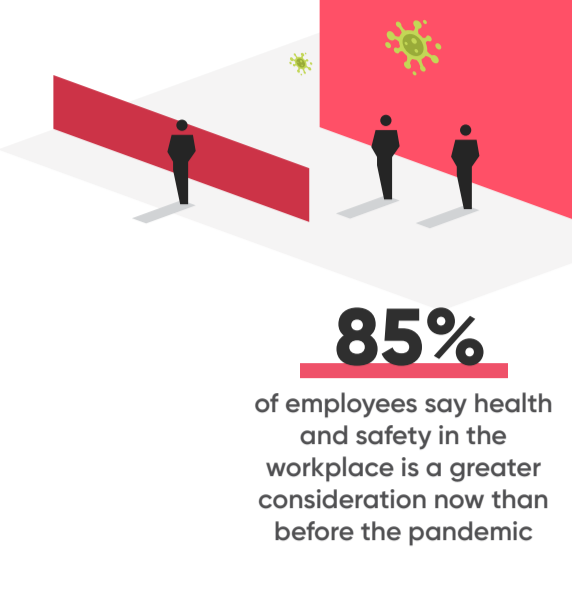
## Impact Report.

— Employee Safety & Security Spotlight.

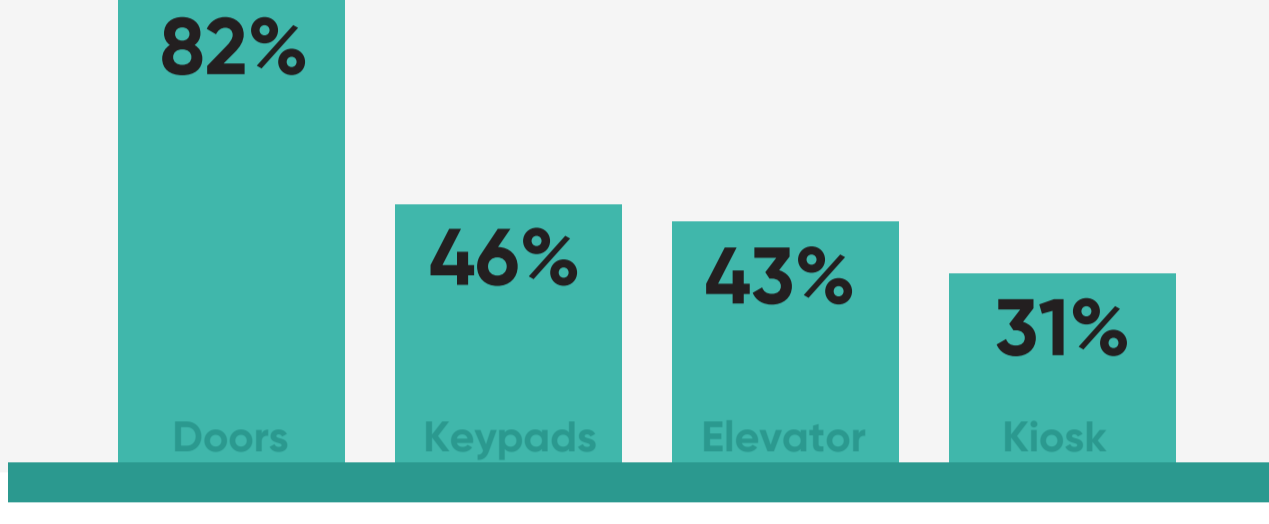
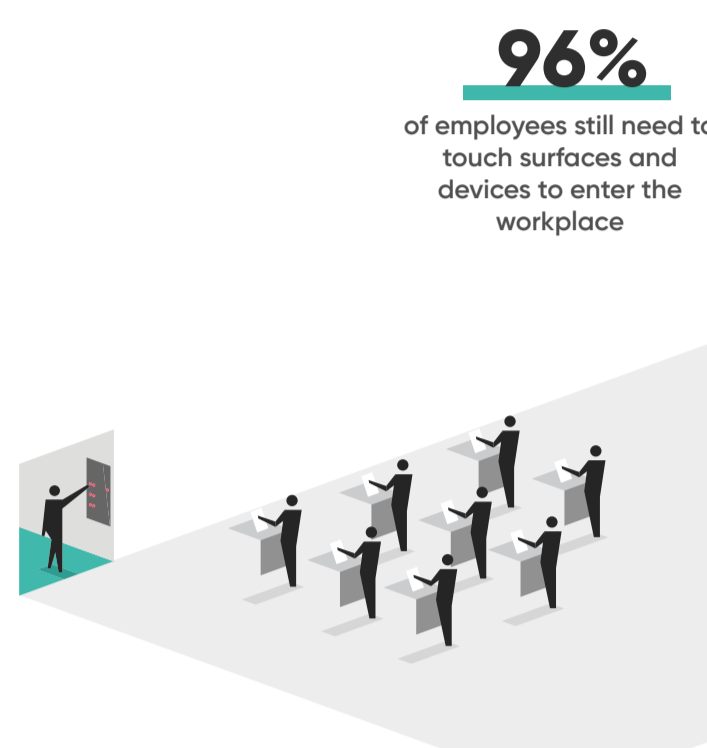
New research reveals the impact of COVID 19 on employee safety and security for back to work. Conducted in June 2020, Traction Guest surveyed 300 employees and 300 security and risk management professionals at enterprise organizations of >1,000 employees.



### As physical workplaces reopen, employee concerns rise.

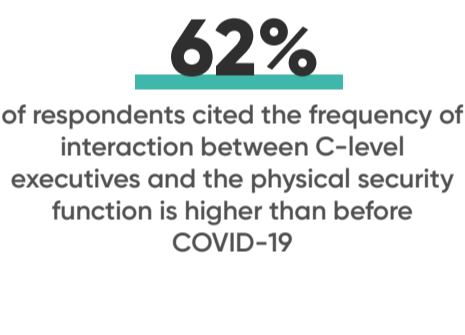
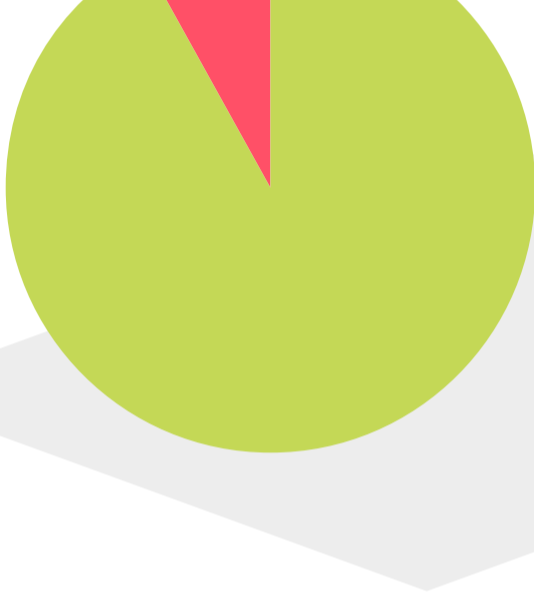


### Most enterprises lack touchless technologies.

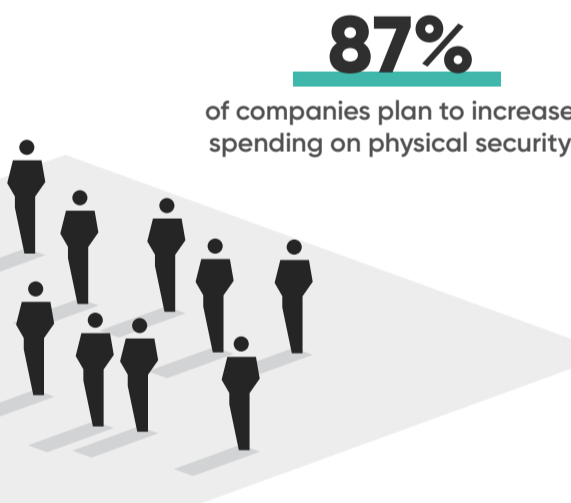


These include: door handles (82%), access control systems like keypads (46%), elevator buttons (43%), and sign-in devices or kiosks (31%)

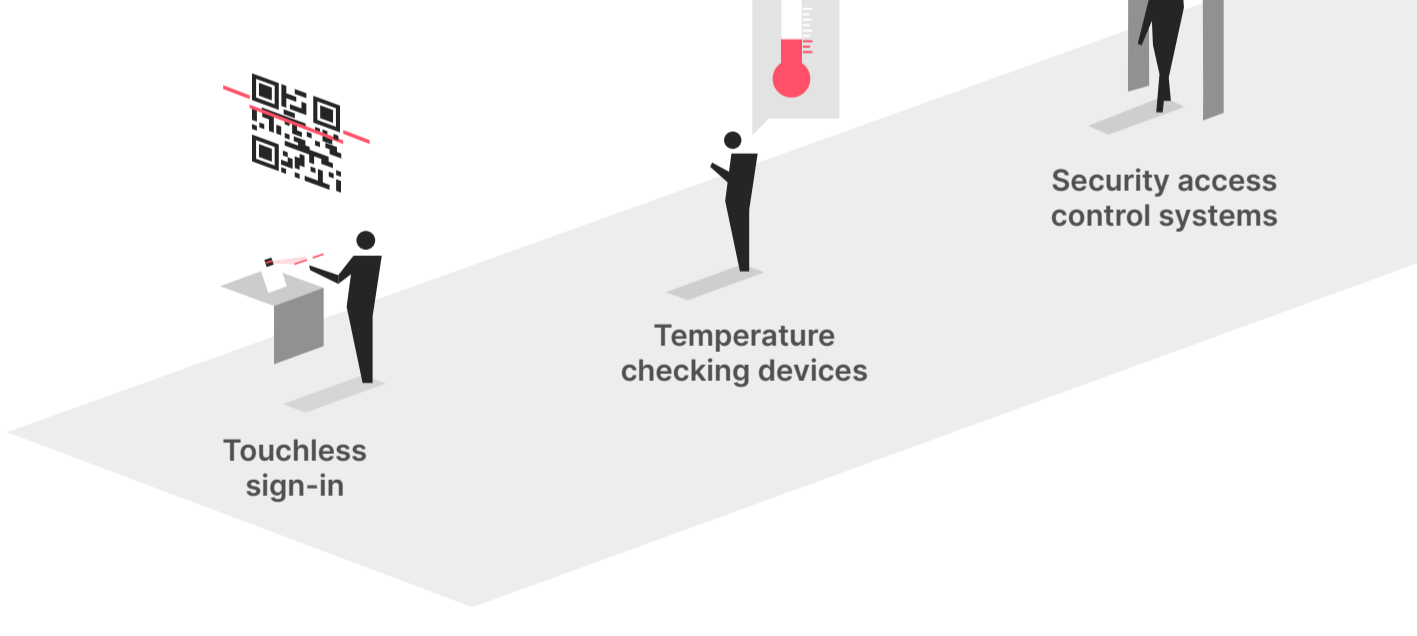
### Physical security is now a strategic imperative.



### Physical security spending on the rise.



### The top three physical security investments planned for the next 6 to 12 months include:



### Touchless sign-in technology enables a safe return to work.



“The safety of both employees and visitors is now a top priority for businesses reopening. Contactless sign-in and sign-out are no longer an option, but a health-standards-driven requirement.”

— Traction Guest CEO  
Keith Metcalfe



For more information, read the press release.

[Read more >](#)

